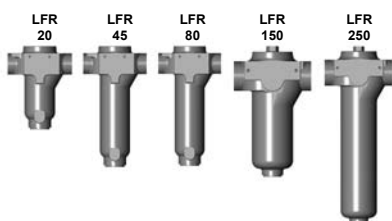




Inline Filter LFR

up to 120 bar, up to 250 l/min



**ELEMENT FLOW
DIRECTION
FROM IN TO OUT**

1. TECHNICAL SPECIFICATIONS

1.1 FILTER HOUSING

Construction

The filter housings are designed in accordance with international regulations. They consist of a filter housing with bolt-on cover plate. The element is removed from the top.

Standard equipment:

- mounting holes in the housing
- magnetic core built into cover plate
- without bypass valve
- oil drain plug

1.2 FILTER ELEMENTS

Hydac filter elements are validated and their quality is constantly monitored according to the following standards:

- ISO 2941, ISO 2942, ISO 2943
- ISO 3968, ISO 11170, ISO 16889

Contamination retention capacities in g

Glass fibre (PGN)

LFR	5 µm	10 µm	25 µm
20	1.45	2.61	2.9
45	3.35	6.03	6.7
80	4.18	7.51	8.35
150	5.25	9.45	10.5
250	8.5	15.3	17

Glass fibre with pre-filter (GSN)			
LFR	5 µm	10 µm	20 µm
20	4.64	6.96	7.83
45	10.72	16.08	18.09
80	13.36	20.04	22.55
150	16.8	25.2	28.35
250	27.2	40.8	45.9

Filter elements are available with the following pressure stability values:

- Glass fibre (PGN): 6 bar
- Glass fibre with pre-filter (GSN): 6 bar
- Wire mesh (WR): 6 bar
- Other filtration ratings on request.

1.4 SEALS

NBR (= Perbunan)

1.6 SPECIAL MODELS

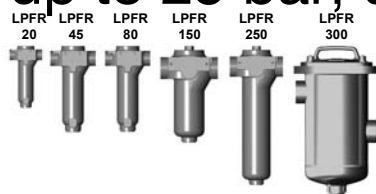
- Connection for clogging indicator in filter housing
- Without magnetic core
- Bypass valve built into housing
- Seals in FPM, EPDM

FILTER SPECIFICATIONS

Nominal pressure	120 bar
Temperature range	-10 °C to +120 °C
Material of filter housing	EN-GJS
Material of cover plate	EN-GJS: LFR 20 to 80 9SMn28k: LFR 15 to 250
Type of clogging indicator	VMR (differential pressure indicator up to 210 bar operating pressure)
Pressure setting of clogging indicator	1.8 bar (others on request)
Cracking pressure of bypass valve (optional)	3 bar (others on request)

Inline Filter LPFR

up to 25 bar, up to 250 l/min



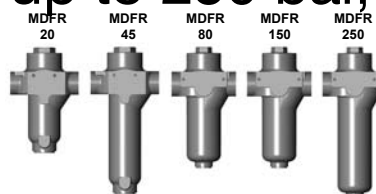
**ELEMENT FLOW
DIRECTION
FROM IN TO OUT**

FILTER SPECIFICATIONS

Nominal pressure	25 bar
Temperature range	-10 °C to +120 °C
Material of filter housing	EN-GJS: LPFR 20 to 250 Steel: LPFR 300
Material of cover plate	EN-GJS: LPFR 20 to 80 EN-GJL: LPFR 150 to 300
Type of clogging indicator	VMR (differential pressure indicator up to 210 bar operating pressure)
Pressure setting of clogging indicator	1.8 bar (others on request)
Cracking pressure of bypass valve (optional)	3 bar (others on request)

Inline Filter MDFR

up to 250 bar, up to 250 l/min



**ELEMENT FLOW
DIRECTION
FROM IN TO OUT**

FILTER SPECIFICATIONS

Nominal pressure	250 bar
Temperature range	-10 °C to +120 °C
Material of filter housing	EN-GJS
Material of cover plate	S355JR: MDFR 20 to 80 EN-GJS: MDFR 150 to 250
Type of clogging indicator	VDR (differential pressure indicator up to 400 bar operating pressure)
Pressure setting of clogging indicator	1.8 bar (others on request)
Cracking pressure of bypass valve (optional)	3 bar (others on request)

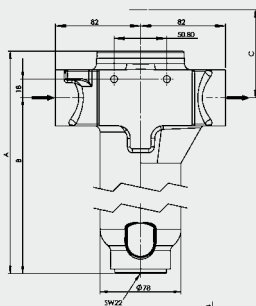
2. MODEL CODE

2.1 COMPLETE FILTER

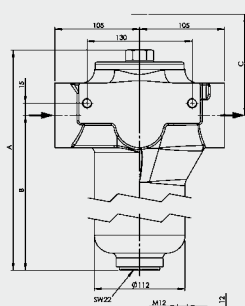
Type	Filter material of element	Size	Operating pressure	Port	Filtration rating	Clogging indicator	Type code	Modification number	Supplementary details
LFR	PGN=glass fibre	20	D=25 bar	B=G 1/2	5	W=no port for indicator	1=standard	.x=the latest version is always supplied	-V=FPM seal (Viton)
LPFR	GSN=glass fibre with pre-filter	45	(only LPFR)	C=G 3/4	10	B=visual			-B3=special bypass cracking pressure 3 bar
MDFR	WR=wire mesh	80	I=120 bar	D=G1	20 (GSN only)	C=electrical			-OM=without magnetic core
		150	(only LFR)	F=G1 1/2	25 (PGN only)	D=visual / electrical only possible with special adapter!			
		250	M=250 bar	G=2					
		300*	(only MDFR)						

3. DIMENSIONS

LFR 20 - 80

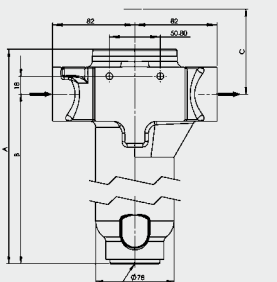


LFR 150 - 250

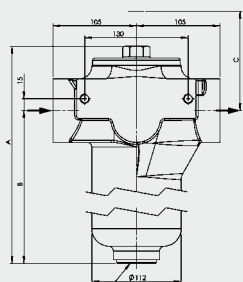


LFR	A	B	C	E	F Ø	Weight incl. element [kg]
20	212	167	180	G 1/2	34	5.3
45	312	267	250	G 3/4	42	5.8
80	312	267	280	G 1	47	6.6
150	354	273	335	G 1 1/2	68	14.2
250	454	373	435	G 2	65	15.0

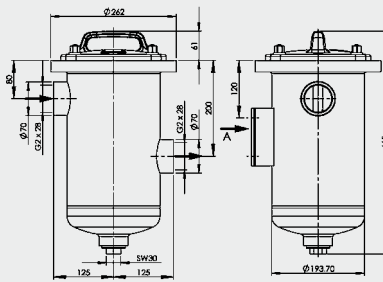
LPFR 20 - 80



LPFR 150 - 250

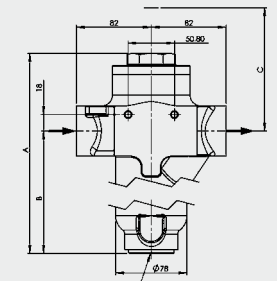


LPFR 300

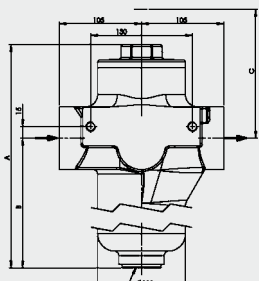


LPFR	A	B	E	F Ø	Weight incl. element [kg]
20	212	167	G 1/2	34	5.3
45	312	267	G 3/4	42	5.8
80	312	267	G 1	47	6.6
150	354	273	G 1 1/2	68	14.2
250	454	373	G 2	65	15.0
300	-	-	-	-	24.2

MDFR 20 - 80



MDFR 150 - 250



MDFR	A	B	C	E	F Ø	Weight incl. element [kg]
20	260	174	200	G 1/2	34	6.2
45	360	274	275	G 3/4	42	7.9
80	360	274	305	G 1	47	8.6
150	405	282	365	G 1 1/2	65	18.4
250	505	382	465	G 2	68	19.0

NOTE

The information in this brochure relates to the operating conditions and applications described.

For applications or operating conditions not described, please contact the relevant technical department.

Subject to technical modifications.

HYDAC Filtrertechnik GmbH
 Industriegebiet
 D-66280 Sulzbach/Saar
 Tel.: 0 68 97 / 509-01
 Fax: 0 68 97 / 509-300
 Internet: www.hydac.com
 E-Mail: filter@hydac.com