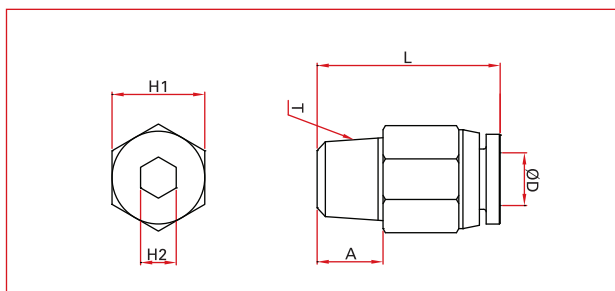


# ONE-TOUCH FITTINGS

## >METRIC SYSTEM

### PC male straight

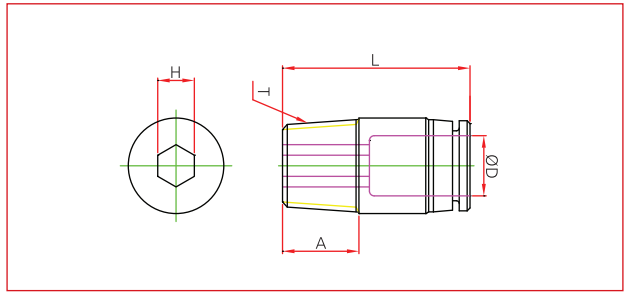


MODEL	ØD	T (Thread)	L	A	H1 (HEX)	H2 (HEX)	Q'ty per bag	Q'ty per box
PC 04-01	4	PT 1/8	20.5	8	10	3	10	100
PC 04-02	4	PT 1/4	19	10	14	3	10	100
PC 04-03	4	PT 3/8	20	11	17	3	10	100
PC 04-M5	4	M5xP0.8	20	3.5	10	2	10	100
PC 04-M6	4	M6xP1.0	20	4	10	2	10	100
PC 06-01	6	PT 1/8	21.3	8	12	4	10	100
PC 06-02	6	PT 1/4	23	10	14	4	10	100
PC 06-03	6	PT 3/8	21	11	17	4	10	100
PC 06-04	6	PT 1/2	25	14	21	4	10	50
PC 06-M5	6	M5xP0.8	21	3.5	12	2	10	100
PC 06-M6	6	M6xP1.0	21	4	12	2	10	100
PC 08-01	8	PT 1/8	26	8	14	5	10	100
PC 08-02	8	PT 1/4	25	10	14	5	10	100
PC 08-03	8	PT 3/8	22	11	17	5	10	100
PC 08-04	8	PT 1/2	26	14	21	5	10	50
PC 10-01	10	PT 1/8	30	8	17	5	10	100
PC 10-02	10	PT 1/4	31.5	10	17	6	10	50
PC 10-03	10	PT 3/8	29	11	17	8	10	50
PC 10-04	10	PT 1/2	27	14	21	8	10	50
PC 12-01	12	PT 1/8	31.5	8	21	5	10	50
PC 12-02	12	PT 1/4	32.8	10	21	6	10	50
PC 12-03	12	PT 3/8	30.6	11	21	8	10	50
PC 12-04	12	PT 1/2	31.6	14	21	8	10	50
PC 14-01	14	PT 1/8	31.5	8	22	5	10	50
PC 14-02	14	PT 1/4	33.5	10	22	6	10	50
PC 14-03	14	PT 3/8	34	11	22	8	10	50
PC 14-04	14	PT 1/2	32.5	14	22	10	10	50
PC 16-01	16	PT 1/8	33.5	8	24	5	10	50
PC 16-02	16	PT 1/4	35.5	10	24	6	10	50
PC 16-03	16	PT 3/8	36.5	11	24	8	5	25
PC 16-04	16	PT 1/2	36.5	14	24	10	5	25



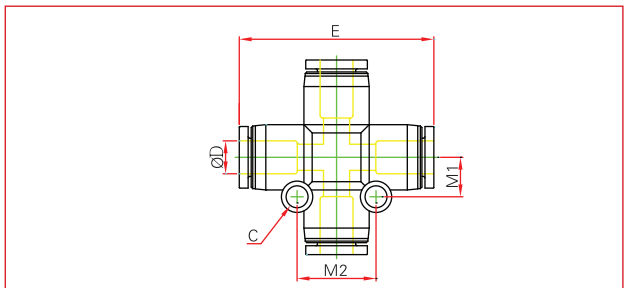
Coiled Reinforced Polyurethane  
Air Hose Assembly

## POC Round male straight



MODEL	ØD	T (Thread)	L	A	H (HEX)	Q'ty per bag	Q'ty per box
POC 04-01	4	PT 1/8	20.5	8	3	10	100
POC 04-02	4	PT 1/4	19	10	3	10	100
POC 04-03	4	PT 3/8	19.5	11	3	10	100
POC 04-M5	4	M5xP0.8	20.5	3.5	2	10	100
POC 04-M6	4	M6xP1.0	20.9	4	2	10	100
POC 06-01	6	PT 1/8	21	8	4	10	100
POC 06-02	6	PT 1/4	23	10	4	10	100
POC 06-03	6	PT 3/8	20.7	11	4	10	100
POC 06-04	6	PT 1/2	24.7	14	4	10	50
POC 06-M5	6	M5xP0.8	21	3.5	2	10	100
POC 06-M6	6	M6xP1.0	21	4	2	10	100
POC 08-01	8	PT 1/8	25.7	8	5	10	100
POC 08-02	8	PT 1/4	25	10	5	10	100
POC 08-03	8	PT 3/8	22	11	5	10	100
POC 08-04	8	PT 1/2	26	14	5	10	50
POC 10-01	10	PT 1/8	30	8	5	10	100
POC 10-02	10	PT 1/4	31.5	10	6	10	100
POC 10-03	10	PT 3/8	29	11	8	10	50
POC 10-04	10	PT 1/2	26.7	14	8	10	50
POC 12-01	12	PT 1/8	30.6	8	5	10	50
POC 12-02	12	PT 1/4	33	10	6	10	50
POC 12-03	12	PT 3/8	30.6	11	8	10	50
POC 12-04	12	PT 1/2	32.8	14	8	10	50
POC 16-03	16	PT 3/8	36.7	11	8	5	25
POC 16-04	16	PT 1/2	36.7	14	10	5	25

## PZA union cross

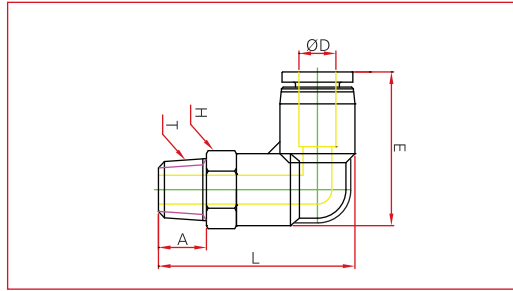


MODEL	ØD	M1	M2	E	C	Q'ty per bag	Q'ty per box
PZA 04	4	7.4	14.8	36.5	3.2	10	50
PZA 06	6	7.9	15.8	38	3.2	10	50
PZA 08	8	9	18	44.8	3.2	5	25
PZA 10	10	11.8	23.5	56.8	4.2	5	20
PZA 12	12	13.3	26.6	58.6	4.2	5	15

# ONE-TOUCH FITTINGS

## >METRIC SYSTEM

### PL male elbow

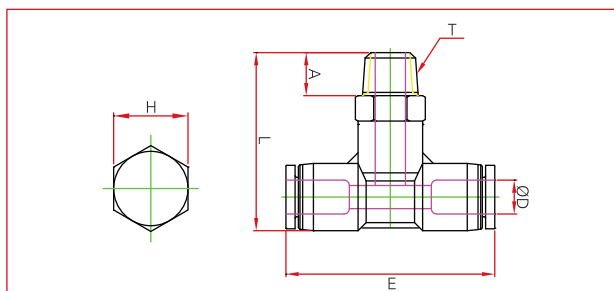


MODEL	ØD	T (Thread)	E	L	A	H (HEX)	Q'ty per bag	Q'ty per box
PL 04-01	4	PT 1/8	23.5	30.3	8	10	10	100
PL 04-02	4	PT 1/4	23.5	32.7	10	14	10	100
PL 04-03	4	PT 3/8	23.5	34	11	17	10	100
PL 04-M5	4	M5xP0.8	23.5	26.5	4	10	10	100
PL 04-M6	4	M6xP1.0	23.5	27	4	10	10	100
PL 06-01	6	PT 1/8	24	31.5	8	12	10	100
PL 06-02	6	PT 1/4	24.5	33.9	10	14	10	50
PL 06-03	6	PT 3/8	24	35.2	11	17	10	50
PL 06-04	6	PT 1/2	24.5	38.7	14	21	10	50
PL 06-M5	6	M5xP0.8	24	28.2	4	12	10	100
PL 06-M6	6	M6xP1.0	24	28.7	4	12	10	100
PL 08-01	8	PT 1/8	29	35	8	14	10	50
PL 08-02	8	PT 1/4	29	37	10	14	10	50
PL 08-03	8	PT 3/8	29	38.3	11	17	10	50
PL 08-04	8	PT 1/2	29.5	41.8	14	21	10	50
PL 10-01	10	PT 1/8	36.5	41.8	8	17	10	50
PL 10-02	10	PT 1/4	36.5	43.8	10	17	10	50
PL 10-03	10	PT 3/8	36.5	44.8	11	17	10	50
PL 10-04	10	PT 1/2	36.5	48.3	14	21	5	25
PL 12-01	12	PT 1/8	39	44.3	8	19	5	25
PL 12-02	12	PT 1/4	39	46.3	10	17	5	25
PL 12-03	12	PT 3/8	39	48.3	11	17	5	25
PL 12-04	12	PT 1/2	39	50.8	14	21	5	25
PL 14-02	14	PT 1/4	39	47	10	19	5	25
PL 14-03	14	PT 3/8	39	49	11	19	5	25
PL 14-04	14	PT 1/2	39	51.5	14	21	5	25
PL 16-03	16	PT 3/8	41	51.7	11	19	5	25
PL 16-04	16	PT 1/2	41	54.2	14	21	5	25

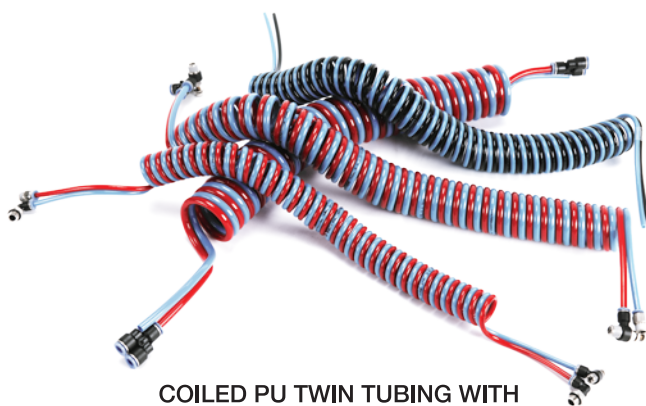


Coiled Nylon Air Hose Assembly

## PT male branch tee



MODEL	ØD	T (Thread)	E	L	A	H (HEX)	Q'ty per bag	Q'ty per box
PT 04-01	4	PT 1/8	37	29.9	8	10	10	50
PT 04-02	4	PT 1/4	37	32	10	14	10	50
PT 04-03	4	PT 3/8	37	33.8	11	17	10	50
PT 04-M5	4	M5xP0.8	37	26.3	4	10	10	100
PT 04-M6	4	M6xP1.0	37	26.8	4	10	10	100
PT 06-01	6	PT 1/8	38	31.5	8	12	10	50
PT 06-02	6	PT 1/4	38	34	10	14	10	50
PT 06-03	6	PT 3/8	38	35.6	11	17	10	50
PT 06-04	6	PT 1/2	38	39.2	14	21	5	25
PT 06-M5	6	M5xP0.8	38	28.4	4	12	10	50
PT 06-M6	6	M6xP1.0	38	28.6	4	12	10	50
PT 08-01	8	PT 1/8	44.5	35	8	14	10	50
PT 08-02	8	PT 1/4	44.5	37	10	14	10	50
PT 08-03	8	PT 3/8	44.5	38.6	11	17	10	50
PT 08-04	8	PT 1/2	44.5	42.9	14	21	5	25
PT 10-01	10	PT 1/8	56.5	42.2	8	17	5	25
PT 10-02	10	PT 1/4	56.5	44.5	10	17	5	25
PT 10-03	10	PT 3/8	56.5	45.5	11	17	5	25
PT 10-04	10	PT 1/2	56.5	48.9	14	21	5	20
PT 12-01	12	PT 1/8	58	44.2	8	19	5	25
PT 12-02	12	PT 1/4	58	46.3	10	19	5	25
PT 12-03	12	PT 3/8	58	48.3	11	19	5	25
PT 12-04	12	PT 1/2	58	50.5	14	21	5	20
PT 14-02	14	PT 1/4	60.5	47.4	10	19	5	20
PT 14-03	14	PT 3/8	60.5	49.6	11	19	5	20
PT 14-04	14	PT 1/2	60.5	52	14	21	5	20
PT 16-03	16	PT 3/8	61.5	55.7	11	19	3	12
PT 16-04	16	PT 1/2	61.5	58.5	14	21	3	12

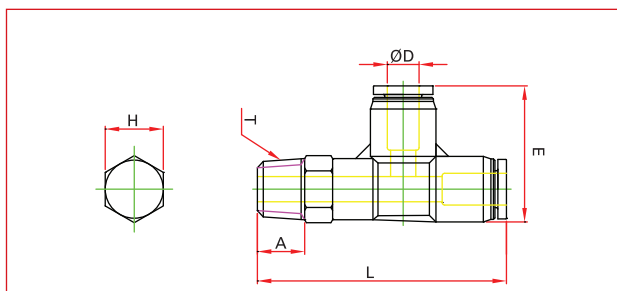


**COILED PU TWIN TUBING WITH ONE-TOUCH FITTING**

# ONE-TOUCH FITTINGS

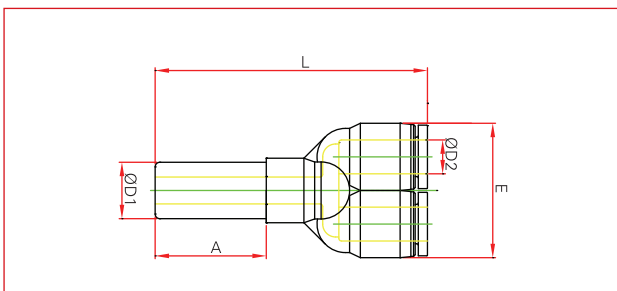
## >METRIC SYSTEM

### PST male run tee



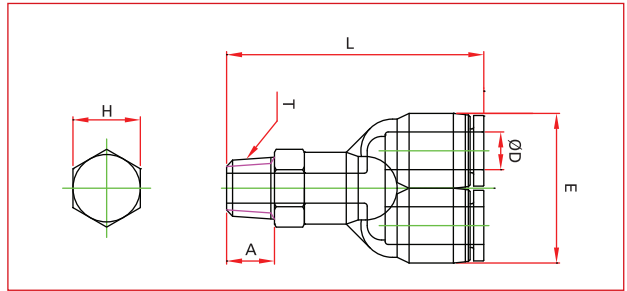
MODEL	ØD	T (Thread)	L	E	A	H (HEX)	Q'ty per bag	Q'ty per box
PST 04-01	4	PT 1/8	43	24	8	10	10	50
PST 04-02	4	PT 1/4	45	24	10	14	10	50
PST 04-03	4	PT 3/8	46	24	11	17	10	50
PST 04-M5	4	M5xP0.8	39	24	4	10	10	100
PST 04-M6	4	M6xP1.0	39	24	4	10	10	100
PST 06-01	6	PT 1/8	44	25.5	8	12	10	50
PST 06-02	6	PT 1/4	46.5	25.5	10	14	10	50
PST 06-03	6	PT 3/8	47.5	25.5	11	17	10	50
PST 06-04	6	PT 1/2	50.5	25.5	14	21	10	50
PST 06-M5	6	M5xP0.8	41	25.5	4	12	10	100
PST 06-M6	6	M6xP1.0	41	25.5	4	12	10	100
PST 08-01	8	PT 1/8	50.5	29.5	8	14	10	50
PST 08-02	8	PT 1/4	52.5	29.5	10	14	10	50
PST 08-03	8	PT 3/8	53.5	29.5	11	17	10	50
PST 08-04	8	PT 1/2	56.5	29.5	14	21	5	25
PST 10-01	10	PT 1/8	62	38	8	17	5	25
PST 10-02	10	PT 1/4	64	38	10	17	5	25
PST 10-03	10	PT 3/8	65	38	11	17	5	25
PST 10-04	10	PT 1/2	68	38	14	21	5	20
PST 12-01	12	PT 1/8	63.5	40	8	17	5	25
PST 12-02	12	PT 1/4	65.5	40	10	17	5	25
PST 12-03	12	PT 3/8	66.5	40	11	17	5	25
PST 12-04	12	PT 1/2	69.5	40	14	21	5	20
PST 14-02	14	PT 1/4	66	42	10	19	5	20
PST 14-03	14	PT 3/8	67	42	11	19	5	20
PST 14-04	14	PT 1/2	71.5	42	14	21	5	20

### PWJ plug-in Y



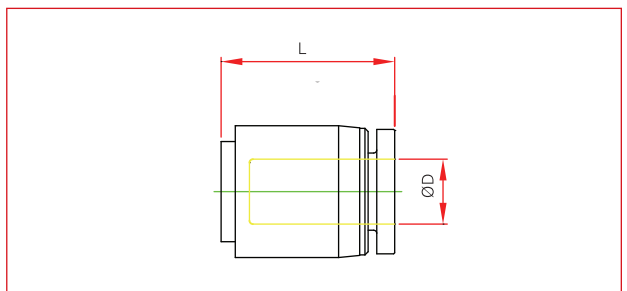
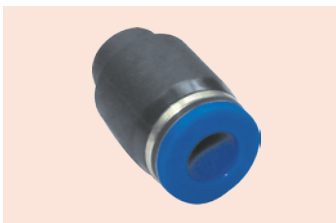
MODEL	ØD1	ØD2	L	A	E	Q'ty per bag	Q'ty per box
PWJ 0604	6	4	52.5	21	22	10	50
PWJ 0806	8	6	56	23.5	26	10	50
PWJ 1008	10	8	63.5	25	29.5	5	25
PWJ 1210	12	10	72	28	37	5	25

## PWT male Y



MODEL	ØD	T (Thread)	L	E	A	H (HEX)	Q'ty per bag	Q'ty per box
PWT 04-01	4	PT 1/8	42	22	8	10	10	50
PWT 04-02	4	PT 1/4	45	22	10	14	10	50
PWT 04-03	4	PT 3/8	46	22	11	17	10	50
PWT 04-M5	4	M5x P 0.8	39	22	4	10	10	100
PWT 04-M6	4	M6x P 1.0	39	22	4	10	10	100
PWT 06-01	6	PT 1/8	45	26	8	12	10	50
PWT 06-02	6	PT 1/4	47	26	10	14	10	50
PWT 06-03	6	PT 3/8	48	26	11	17	10	50
PWT 06-04	6	PT 1/2	51	26	14	21	5	25
PWT 06-M5	6	M5x P 0.8	41	26	4	12	10	50
PWT 06-M6	6	M6x P 1.0	41	26	4	12	10	50
PWT 08-01	8	PT 1/8	47	30	8	14	10	50
PWT 08-02	8	PT 1/4	49	30	10	14	10	50
PWT 08-03	8	PT 3/8	50	30	11	17	10	50
PWT 08-04	8	PT 1/2	54	30	14	21	5	25
PWT 10-01	10	PT 1/8	57	37	8	17	5	25
PWT 10-02	10	PT 1/4	59	37	10	17	5	25
PWT 10-03	10	PT 3/8	60	37	11	17	5	25
PWT 10-04	10	PT 1/2	63	37	14	21	5	20
PWT 12-01	12	PT 1/8	60	42.5	8	19	5	20
PWT 12-02	12	PT 1/4	62	42.5	10	19	5	20
PWT 12-03	12	PT 3/8	63	42.5	11	19	5	20
PWT 12-04	12	PT 1/2	66	42.5	14	21	5	20
PWT 16-03	16	PT 3/8	65.5	51.5	11	19	3	15
PWT 16-04	16	PT 1/2	69	51.5	14	21	3	15

## PPF cap

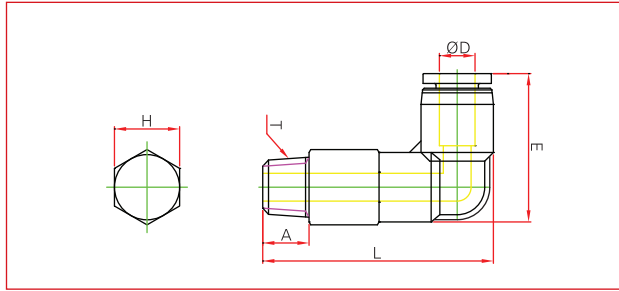


MODEL	ØD	L	Q'ty per bag	Q'ty per box
PPF 04	4	18	10	100
PPF 06	6	19	10	100
PPF 08	8	21	10	100
PPF 10	10	24	10	50
PPF 12	12	25	10	50
PPF 16	16	27.5	5	25

# ONE-TOUCH FITTINGS

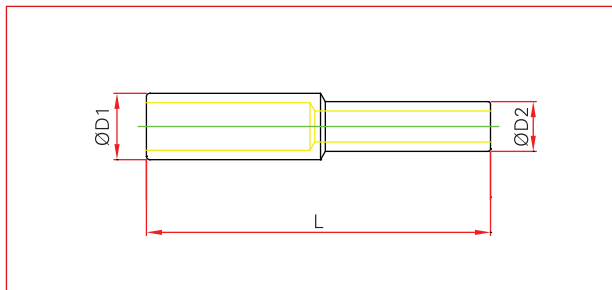
## >METRIC SYSTEM

### PLL extended male elbow



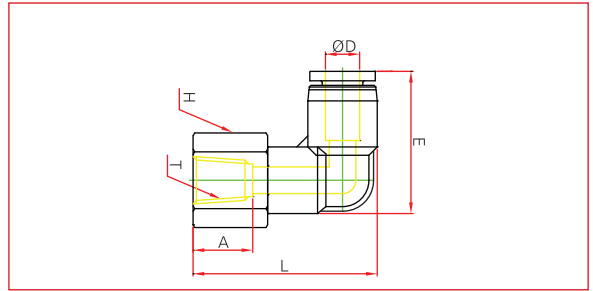
MODEL	ØD	T (Thread)	E	L	A	H (HEX)	Q'ty per bag	Q'ty per box
PLL 04-01	4	PT 1/8	23.5	40.3	8	10	10	50
PLL 04-02	4	PT 1/4	23.5	44	10	14	10	50
PLL 04-03	4	PT 3/8	23.5	44	11	17	10	50
PLL 04-M5	4	M5x P0.8	23.5	37	4	10	10	100
PLL 04-M6	4	M6x P1.0	23.5	37	4	10	10	100
PLL 06-01	6	PT 1/8	25	43.5	8	12	10	50
PLL 06-02	6	PT 1/4	25	45.9	10	14	10	50
PLL 06-03	6	PT 3/8	25	47.2	11	17	10	50
PLL 06-04	6	PT 1/2	25	50.7	14	21	10	50
PLL 06-M5	6	M5x P0.8	25	41.2	4	12	10	100
PLL 06-M6	6	M6x P1.0	25	41.2	4	12	10	100
PLL 08-01	8	PT 1/8	30	49	8	14	10	50
PLL 08-02	8	PT 1/4	30	51	10	14	10	50
PLL 08-03	8	PT 3/8	30	52.3	11	17	10	50
PLL 08-04	8	PT 1/2	30	55.8	14	21	5	25
PLL 10-01	10	PT 1/8	36	58.5	8	17	5	25
PLL 10-02	10	PT 1/4	36	60.8	10	17	5	25
PLL 10-03	10	PT 3/8	36	61.8	11	17	5	25
PLL 10-04	10	PT 1/2	36	65.3	14	21	5	25
PLL 12-02	12	PT 1/4	38.5	70	10	19	5	25
PLL 12-03	12	PT 3/8	38.5	68.3	11	19	5	25
PLL 12-04	12	PT 1/2	38.5	68	14	21	5	25

### PIG



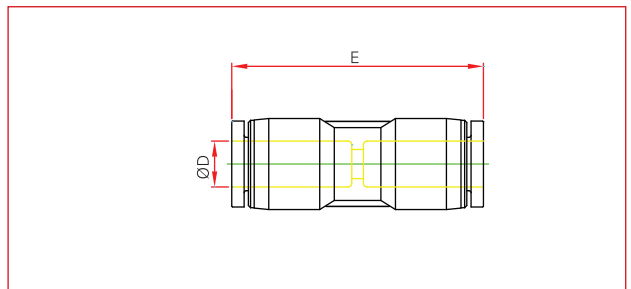
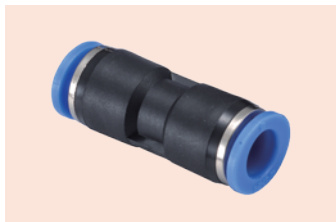
MODEL	ØD1	ØD2	L	Q'ty per bag	Q'ty per box
PIG 06-04	6	4	36	10	100
PIG 08-04	8	4	37.5	10	100
PIG 08-06	8	6	39	10	100
PIG 10-06	10	6	41.5	10	100
PIG 10-08	10	8	43	10	100
PIG 12-08	12	8	44.5	10	100
PIG 12-10	12	10	48	10	100
PIG 16-12	16	12	54	10	100

## PLF extended female elbow



MODEL	ØD	T (Thread)	L	E	A	H (Hex)	Q'ty per bag	Q'ty per box
PLF 04-01	4	PT 1/8	28.5	23.5	8	14	10	50
PLF 04-02	4	PT 1/4	31	23.5	11	17	10	50
PLF 04-M5	4	M5xP0.8	24.5	23.5	7	10	10	100
PLF 04-M6	4	M6xP1.0	24.5	23.5	7	10	10	100
PLF 06-01	6	PT 1/8	29.5	25	8	14	10	50
PLF 06-02	6	PT 1/4	32	25	10	17	10	50
PLF 06-03	6	PT 3/8	33.5	25	11	21	10	50
PLF 06-04	6	PT 1/2	36.5	25	14	24	10	50
PLF 06-M5	6	M5xP0.8	25.5	25	7	10	10	100
PLF 06-M6	6	M6xP1.0	25.5	25	7	10	10	100
PLF 08-01	8	PT 1/8	33	29.5	8	14	10	50
PLF 08-02	8	PT 1/4	35.5	29.5	10	17	10	50
PLF 08-03	8	PT 3/8	37	29.5	11	21	10	50
PLF 08-04	8	PT 1/2	40	29.5	14	24	5	25
PLF 10-01	10	PT 1/8	34.5	36	8	17	5	25
PLF 10-02	10	PT 1/4	41	36	10	17	5	25
PLF 10-03	10	PT 3/8	43	36	11	21	5	25
PLF 10-04	10	PT 1/2	46	36	14	24	5	20
PLF 12-01	12	PT 1/8	44.5	38.5	11	19	5	20
PLF 12-02	12	PT 1/4	44.5	38.5	10	19	5	20
PLF 12-03	12	PT 3/8	45	39.5	12	21	5	20
PLF 12-04	12	PT 1/2	49	37.5	14	24	5	20

## PUC union straight



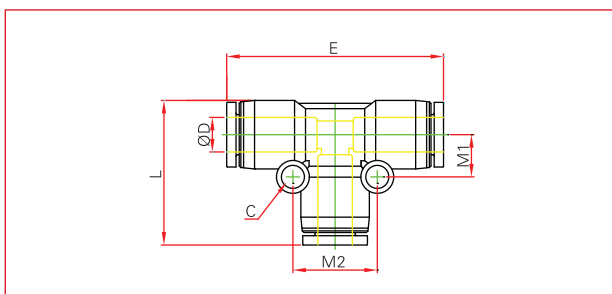
MODEL	ØD	E	Q'ty per bag	Q'ty per box
PUC 04	4	33	10	100
PUC 06	6	34.5	10	100
PUC 08	8	38.5	10	50
PUC 10	10	48.5	10	50
PUC 12	12	49	5	25
PUC 14	14	51.5	5	25
PUC 16	16	63.5	5	25



# ONE-TOUCH FITTINGS

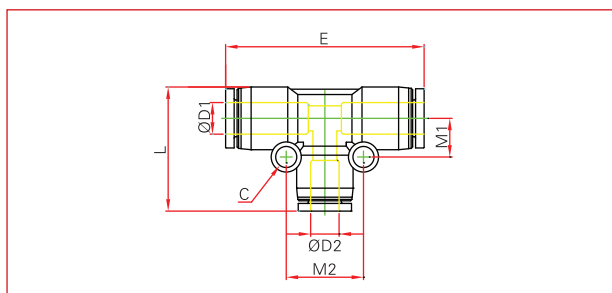
## >METRIC SYSTEM

### PUT union tee



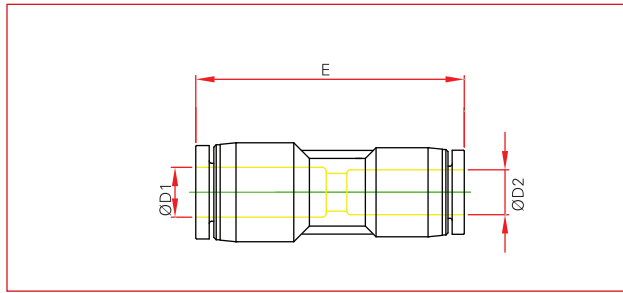
MODEL	ØD	E	L	M1	M2	C	Q'ty per bag	Q'ty per box
PUT 04	4	36.5	24	7	14	3.2	10	100
PUT 06	6	37.5	25.5	8	16	3.2	10	50
PUT 08	8	44.5	29.5	9	18	3.2	10	50
PUT 10	10	57	37	12	24	4.2	5	25
PUT 12	12	58	39	13.5	27	4.2	5	25
PUT 14	14	60.7	42.5	13.5	27	4.2	5	20
PUT 16	16	64	45	14	28	4.2	3	15

### PGT reducer tee



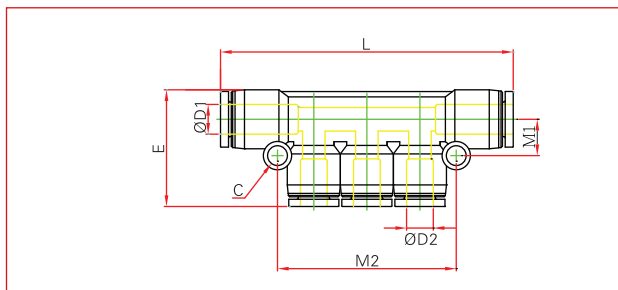
MODEL	ØD1	ØD2	L	E	C	M1	M2	Q'ty per bag	Q'ty per box
PGT 0406	4	6	24.5	37.5	3.2	6.9	13.8	10	50
PGT 0408	4	8	28	41	3.2	8.3	16.6	10	50
PGT 0604	6	4	25.5	38	3.2	8	13.8	10	50
PGT 0608	6	8	28	41	3.2	8.3	16.6	10	50
PGT 0610	6	10	34	44.5	4.2	8.4	22	10	50
PGT 0804	8	4	29.5	43.5	3.2	9	16.6	10	50
PGT 0806	8	6	29.5	43.5	3.2	9	16.6	10	50
PGT 0810	8	10	34.5	48	4.2	9.2	22	5	25
PGT 0812	8	12	35.2	48.5	4.2	9.2	24.6	5	25
PGT 1006	10	6	31.5	53	4.2	11	16.8	5	25
PGT 1008	10	8	32	56	4.2	11	18.4	5	25
PGT 1012	10	12	38.2	58	4.2	11	24.6	5	25
PGT 1208	12	8	35	56	4.2	12.3	18.4	5	25
PGT 1210	12	10	39	57.5	4.2	12.3	18.4	5	25
PGT 1412	14	12	41	60.5	4.2	14.5	26.5	5	20
PGT 1612	16	12	44.5	65	4.2	14.6	24.6	3	15
PGT 1614	16	14	46	65	4.2	14	28	3	15

## PG reducer



MODEL	ØD1	ØD2	E	Q'ty per bag	Q'ty per box
PG 0604	6	4	34	10	100
PG 0804	8	4	36.5	10	100
PG 0806	8	6	36.5	10	50
PG 1006	10	6	43	10	50
PG 1008	10	8	43	10	50
PG 1208	12	8	47	10	50
PG 1210	12	10	49	5	25
PG 1412	14	12	51	5	25
PG 1612	16	12	64	5	25
PG 1614	16	14	65	5	25

## PKG reducer triple branch union

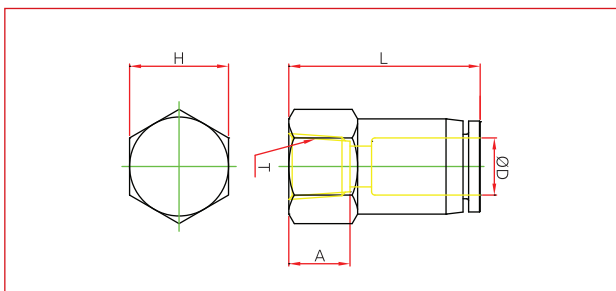


MODEL	ØD1	ØD2	M1	M2	L	E	C	Q'ty per bag	Q'ty per box
PKG 0404	4	4	9	41.5	59	27	3.2	5	25
PKG 0606	6	6	9	41.5	59.5	27	3.2	5	25
PKG 0808	8	8	12	47.8	79.5	33	4.2	5	20
PKG 1010	10	10	12	56.5	90.9	37.5	3.5	5	15
PKG 1212	12	12	15.5	67.5	99.4	39.5	4.5	5	15
PKG 0604	6	4	9	41.5	59.5	27	3.2	5	25
PKG 0804	8	4	9	41.5	61	27	3.2	5	25
PKG 0806	8	6	9	41.5	61	27	3.2	5	25
PKG 1006	10	6	12	47.8	81	32.5	4.2	5	25
PKG 1008	10	8	12	47.8	81	32.5	4.2	5	20
PKG 1208	12	8	15.5	59.5	91.8	37	4.5	5	15
PKG 1210	12	10	15.5	59.5	91.8	38	4.5	5	15

# ONE-TOUCH FITTINGS

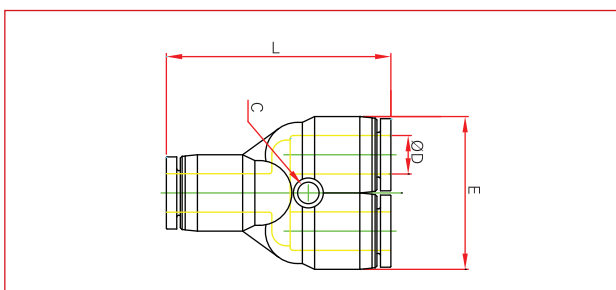
## >METRIC SYSTEM

### PCF female straight



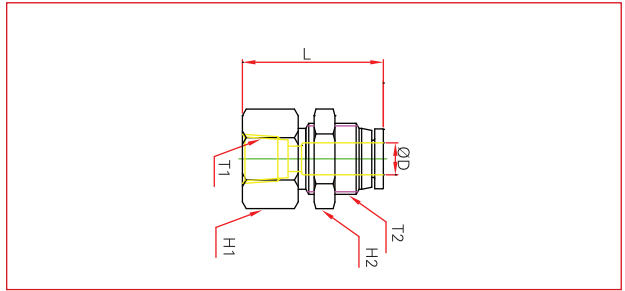
MODEL	ØD	T	L	A	H (HEX)	Q'ty per bag	Q'ty per box
PCF 04-M5	4	M5x P0.8	21	5	10	10	100
PCF 04-01	4	PT 1/8	23.5	8.5	14	10	100
PCF 04-02	4	PT 1/4	26.5	10	17	10	100
PCF 06-M5	6	M5x P0.8	20.5	5	12	10	100
PCF 06-01	6	PT 1/8	25	8.5	14	10	100
PCF 06-02	6	PT 1/4	27	10	17	10	100
PCF 06-03	6	PT 3/8	28	12	20	10	50
PCF 06-04	6	PT 1/2	30	13	24	10	50
PCF 08-01	8	PT 1/8	26	8.5	14	10	100
PCF 08-02	8	PT 1/4	28.5	10	17	10	100
PCF 08-03	8	PT 3/8	30	12	20	10	50
PCF 08-04	8	PT 1/2	32	13	24	10	50
PCF 10-01	10	PT 1/8	30	8.5	17	10	50
PCF 10-02	10	PT 1/4	32	11	17	10	50
PCF 10-03	10	PT 3/8	33	11	20	10	50
PCF 10-04	10	PT 1/2	35	13	24	10	50
PCF 12-02	12	PT 1/4	35	11	21	10	50
PCF 12-03	12	PT 3/8	35	12	21	10	50
PCF 12-04	12	PT 1/2	37.5	14	24	5	25
PCF 16-03	16	PT 3/8	36.5	11	24	5	25
PCF 16-04	16	PT 1/2	38.5	13	24	5	25

### PY union y



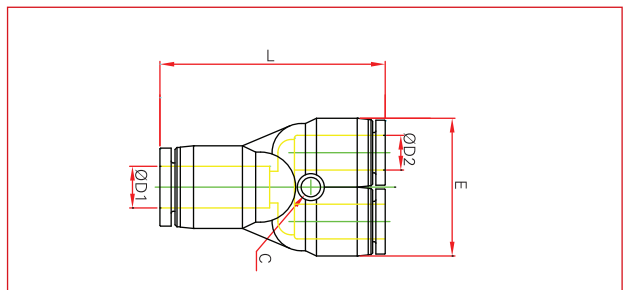
MODEL	ØD	L	E	C	Q'ty per bag	Q'ty per box
PY 04	4	35.5	22	3.2	10	100
PY 06	6	37	26	3.2	10	50
PY 08	8	39.5	30	3.2	10	50
PY 10	10	50.5	37	4.2	5	25
PY 12	12	52.5	42	4.2	5	25
PY 16	16	55.5	51.5	4.2	3	15

**PMF** bulkhead female straight



MODEL	ØD	T1 (Thread)	T2	L	H1 (HEX)	H2 (HEX)	Q'ty per bag	Q'ty per box
PMF 04-01	4	PT 1/8	M12xP1.0	24	14	14	10	100
PMF 04-02	4	PT 1/4	M12xP1.0	26.5	17	14	10	100
PMF 06-01	6	PT 1/8	M14xP1.0	25	17	17	10	100
PMF 06-02	6	PT 1/4	M14xP1.0	27	17	17	10	100
PMF 06-03	6	PT 3/8	M14xP1.0	28	19	17	10	50
PMF 08-01	8	PT 1/8	M16xP1.0	26	19	19	10	50
PMF 08-02	8	PT 1/4	M16xP1.0	29	19	19	10	50
PMF 08-03	8	PT 3/8	M16xP1.0	29.5	19	19	10	50
PMF 08-04	8	PT 1/2	M16xP1.0	31.5	24	19	5	25
PMF 10-01	10	PT 1/8	M20xP1.0	30.5	24	24	10	50
PMF 10-02	10	PT 1/4	M20xP1.0	33	24	24	10	50
PMF 10-03	10	PT 3/8	M20xP1.0	34	24	24	10	50
PMF 10-04	10	PT 1/2	M20xP1.0	37	24	24	5	25
PMF 12-02	12	PT 1/4	M22xP1.0	34	27	27	5	25
PMF 12-03	12	PT 3/8	M22xP1.0	34	27	27	5	25
PMF 12-04	12	PT 1/2	M22xP1.0	36	27	27	5	25

**PW** reducer y

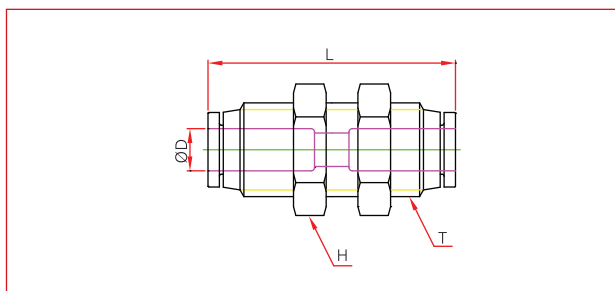


MODEL	ØD1	ØD2	L	E	C	Q'ty per bag	Q'ty per box
PW 0604	6	4	36	22	3.2	10	100
PW 0804	8	4	37	26	3.2	10	50
PW 0806	8	6	37	26	3.2	10	50
PW 1006	10	6	43.5	29	3.2	10	50
PW 1008	10	8	43	29	3.2	10	50
PW 1208	12	8	50	36.5	4.2	5	25
PW 1210	12	10	51	36.5	4.2	5	25
PW 1612	16	12	54.5	51.5	4.2	5	15
PW 1614	16	14	55	51.5	4.2	5	15

## ONE-TOUCH FITTINGS

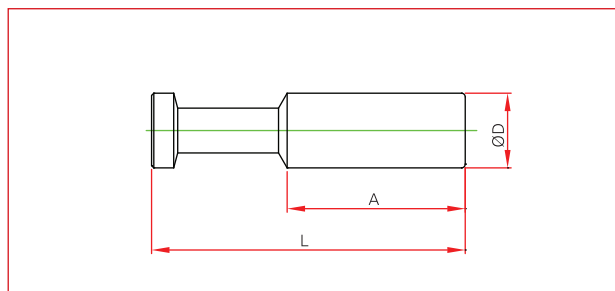
### >METRIC SYSTEM

#### PMM bulkhead union



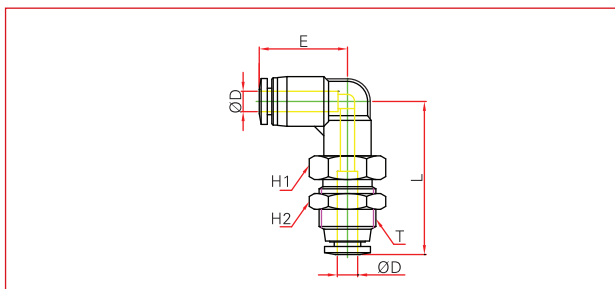
MODEL	ØD	T	L	H (HEX)	Q'ty per bag	Q'ty per box
PMM 04	4	M12xP1.0	30.5	14	10	100
PMM 06	6	M14xP1.0	31	17	10	100
PMM 08	8	M16xP1.0	35	19	10	50
PMM 10	10	M20xP1.0	41	24	5	25
PMM 12	12	M22xP1.0	44	27	5	25

#### PP plug



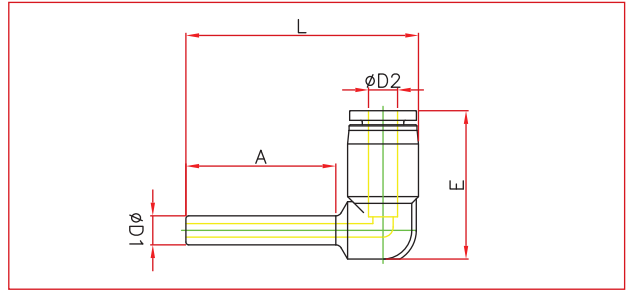
MODEL	ØD	L	A	Q'ty per bag	Q'ty per box
PP 04	4	28	15	10	100
PP 06	6	33	17	10	100
PP 08	8	36	18	10	100
PP 10	10	42.5	22	10	100
PP 12	12	43	22	10	100
PP 16	16	49	24.5	10	50

#### PLM bulkhead union elbow



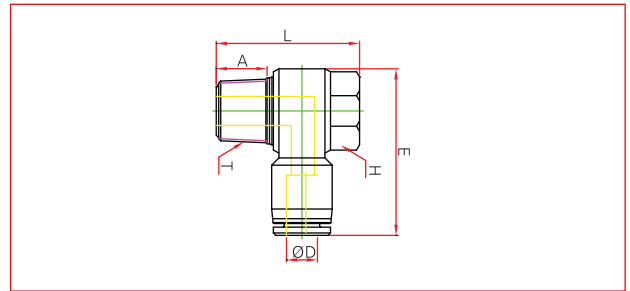
MODEL	ØD	T	L	E	H1 (Hex)	H2 (Hex)	Q'ty per bag	Q'ty per box
PLM 04	4	M12xP1.0	33.5	23	14	14	10	50
PLM 06	6	M14xP1.0	38	24	17	17	10	50
PLM 08	8	M16xP1.0	43	29	19	19	10	50
PLM 10	10	M20xP1.0	50	36	24	24	5	25
PLM 12	12	M22xP1.0	57	38	27	27	5	25

## PLJ plug-in elbow



MODEL	ØD1	ØD2	L	E	A	Q'ty per bag	Q'ty per box
PLJ 04	4	4	38	23.5	20.5	10	100
PLJ 06	6	6	41	24	22	10	100
PLJ 08	8	8	46.5	29.5	24	10	50
PLJ 10	10	10	55	36	25.5	10	50
PLJ 12	12	12	59	37	27	5	25
PLJ 16	16	16	72	45	32.5	5	25
PLJ 0604	6	4	39.5	23.5	22	10	100
PLJ 0806	8	6	43.5	24	24	10	100
PLJ 1008	10	8	49	29.5	25.5	10	50
PLJ 1210	12	10	59.5	36	27	5	25

## PH male banjo

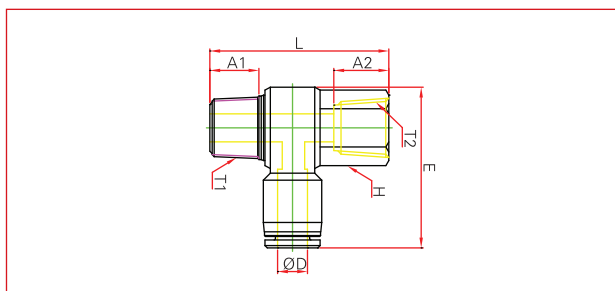


MODEL	ØD	T (Thread)	E	L	A	H (HEX)	Q'ty per bag	Q'ty per box
PH 04-01	4	PT 1/8	29	23.6	7	12	10	50
PH 04-02	4	PT 1/4	34	26.5	8.5	14	10	50
PH 04-M5	4	M5xP0.8	25	17.5	4	8	10	100
PH 04-M6	4	M6xP1.0	25	17.5	4	8	10	100
PH 06-01	6	PT 1/8	30	23	7	12	10	50
PH 06-02	6	PT 1/4	34	26.5	9.5	14	10	50
PH 06-03	6	PT 3/8	38	32	10.5	19	5	25
PH 06-04	6	PT 1/2	46	39.1	14	24	5	25
PH 06-M5	6	M5xP0.8	26.5	17.5	4	8	10	100
PH 06-M6	6	M6xP1.0	26.5	17.5	4	8	10	100
PH 08-01	8	PT 1/8	32	24	7	12	10	50
PH 08-02	8	PT 1/4	37	26.5	9.5	14	10	50
PH 08-03	8	PT 3/8	40	32	10.5	19	5	25
PH 08-04	8	PT 1/2	46	39.1	14	24	5	25
PH 10-01	10	PT 1/8	37.5	24	7	12	10	50
PH 10-02	10	PT 1/4	41	26.5	9.5	14	10	50
PH 10-03	10	PT 3/8	43.5	32	10.5	19	5	25
PH 10-04	10	PT 1/2	50	39.1	14	24	5	20
PH 12-02	12	PT 1/4	42.5	26.5	8.5	14	5	25
PH 12-03	12	PT 3/8	46	32	10.5	19	5	25
PH 12-04	12	PT 1/2	50	39.1	14	24	5	20

# ONE-TOUCH FITTINGS

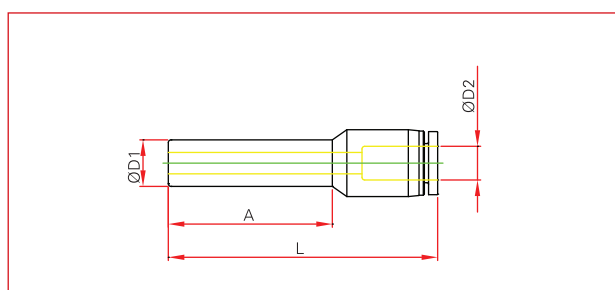
## >METRIC SYSTEM

### PHF female banjo



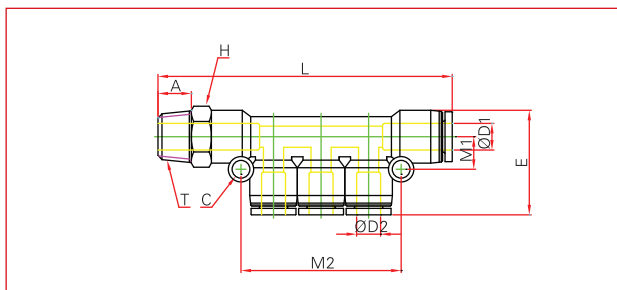
MODEL	ØD	T1	T2	L	E	A1	A2	H (Hex)	Q'ty per bag	Q'ty per box
PHF 04-M5	4	M5x P0.8	M5xP0.8	20	25	4	5	8	10	100
PHF 04-M6	4	M6x P1.0	M6xP1.0	20.8	25	4	5	8	10	100
PHF 04-01	4	PT 1/8	PT 1/8	28	29.5	7.5	6.5	14	10	50
PHF 04-02	4	PT 1/4	PT 1/4	33	33	9.5	8.5	17	10	50
PHF 06-M5	6	M5x P0.8	M5xP0.8	20	26.5	4	5	8	10	100
PHF 06-M6	6	M6x P1.0	M6xP1.0	20.8	26.5	4	5	8	10	100
PHF 06-01	6	PT 1/8	PT 1/8	28	30	7.5	6.5	14	10	50
PHF 06-02	6	PT 1/4	PT 1/4	33	34	9.5	8.5	17	10	50
PHF 06-03	6	PT 3/8	PT 3/8	40	38	10.5	9.5	21	5	25
PHF 06-04	6	PT 1/2	PT 1/2	46.6	46	14	11.5	24	5	25
PHF 08-01	8	PT 1/8	PT 1/8	28	32.5	7.5	6.5	14	10	50
PHF 08-02	8	PT 1/4	PT 1/4	33	37.5	9.5	8.5	17	10	50
PHF 08-03	8	PT 3/8	PT 3/8	38.9	40	10.5	9.5	21	5	25
PHF 08-04	8	PT 1/2	PT 1/2	46.6	46	14	11.5	24	5	25
PHF 10-01	10	PT 1/8	PT 1/8	28	37	7.5	6.5	14	5	25
PHF 10-02	10	PT 1/4	PT 1/4	33	41	9.5	8.5	17	5	25
PHF 10-03	10	PT 3/8	PT 3/8	38.9	43.5	10.5	9.5	21	5	25
PHF 10-04	10	PT 1/2	PT 1/2	46.6	49.5	14	11.5	24	5	15
PHF 12-02	12	PT 1/4	PT 1/4	33	42.5	9.5	8.5	17	5	25
PHF 12-03	12	PT 3/8	PT 3/8	38.9	46	10.5	9.5	21	5	20
PHF 12-04	12	PT 1/2	PT 1/2	46.6	50	14	11.5	24	5	15

### PGJ plug-in reducer



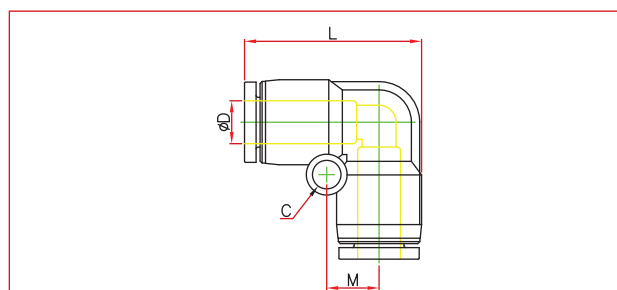
MODEL	ØD1	ØD2	L	A	Q'ty per bag	Q'ty per box
PGJ 06-04	6	4	38.5	22	10	100
PGJ 08-04	8	4	39	25	10	100
PGJ 08-06	8	6	42	25	10	100
PGJ 10-06	10	6	41	26.5	10	100
PGJ 10-08	10	8	45.5	26.5	10	100
PGJ 12-06	12	6	40	26.5	10	100
PGJ 12-08	12	8	43	26.5	10	50
PGJ 12-10	12	10	51	26.5	10	50

## PKD male reducer triple branch



MODEL	ØD1	ØD2	L	E	M1	M2	C	A	H (Hex)	T	Q'ty per bag	Q'ty per box
PKD 04-01	4	4	68	27	9	41.5	3.2	8	10	PT 1/8	5	25
PKD 04-02	4	4	70.4	27	9	41.5	3.2	8	10	PT 1/4	5	25
PKD 0604-01	6	4	68	27	9	41.5	3.2	8	12	PT 1/8	5	25
PKD 0604-02	6	4	70.5	27	9	41.5	3.2	8	12	PT 1/4	5	25
PKD 0804-01	8	4	68.5	27	9	41.5	3.2	8	14	PT 1/8	5	25
PKD 0804-02	8	4	70.5	27	9	41.5	3.2	10	14	PT 1/4	5	25
PKD 06-01	6	6	68	27	9	41.5	3.2	8	12	PT 1/8	5	25
PKD 06-02	6	6	70.5	27	9	41.5	3.2	10	14	PT 1/4	5	25
PKD 0806-01	8	6	68	27	9	41.5	3.2	8	14	PT 1/8	5	25
PKD 0806-02	8	6	70.5	27	9	41.5	3.2	10	14	PT 1/4	5	25
PKD 08-02	8	8	88.5	33	12	47.8	4.2	10	14	PT 1/4	5	25
PKD 08-03	8	8	89.3	33	12	47.8	4.2	11	17	PT 3/8	5	25
PKD 1006-02	10	6	89.5	33	12	47.8	4.2	10	17	PT 1/4	5	20
PKD 1006-03	10	6	90.3	33	12	47.8	4.2	11	17	PT 3/8	5	20
PKD 1008-02	10	8	89.5	33	12	47.8	4.2	10	17	PT 1/4	5	15
PKD 1008-03	10	8	90.3	33	12	47.8	4.2	11	17	PT 3/8	5	15
PKD 10-02	10	10	98.7	37.5	12	56.5	4.5	10	17	PT 1/4	5	15
PKD 10-03	10	10	100	37.5	12	56.5	4.5	11	17	PT 3/8	5	15
PKD 10-04	10	10	103.5	37.5	12	56.5	4.5	14	21	PT 1/2	5	15
PKD 1208-03	12	8	100	37	15.5	59.5	4.5	11	19	PT 3/8	5	15
PKD 1208-04	12	8	103.5	37	15.5	59.5	4.5	14	21	PT 1/2	5	15
PKD 1210-03	12	10	100	38	15.5	59.5	4.5	11	19	PT 3/8	5	15
PKD 1210-04	12	10	103.5	38	15.5	59.5	4.5	14	21	PT 1/2	5	15
PKD 12-03	12	12	104.5	39.7	15.5	67.5	4.5	11	19	PT 3/8	5	15
PKD 12-04	12	12	107.5	39.7	15.5	67.5	4.5	14	21	PT 1/2	5	15

## PUL union elbow



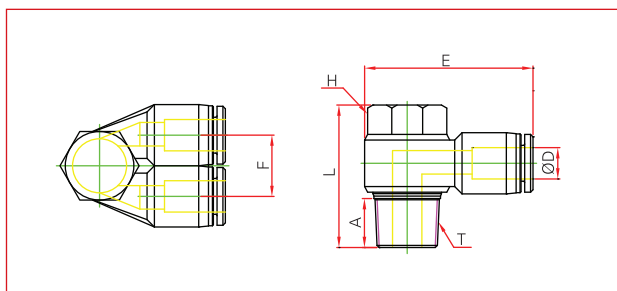
MODEL	ØD	L	M	C	Q'ty per bag	Q'ty per box
PUL 04	4	24	7	3.2	10	100
PUL 06	6	25	8	3.2	10	100
PUL 08	8	29	9	3.2	10	50
PUL 10	10	37	12	4.2	10	50
PUL 12	12	40	13.5	4.2	5	25
PUL 14	14	41.5	13.5	4.2	5	25
PUL 16	16	45.5	14	5.2	5	25



# ONE-TOUCH FITTINGS

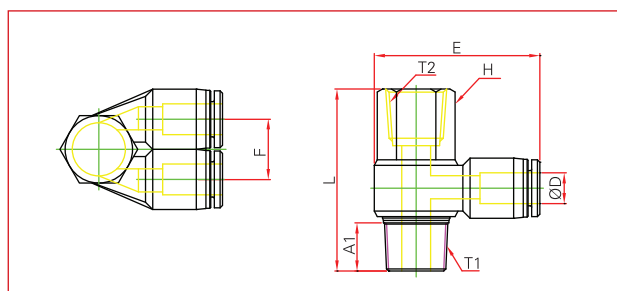
## >METRIC SYSTEM

### PA dual male banjo



MODEL	ØD	T	E	L	F	A	H (Hex)	Q'ty per bag	Q'ty per box
PA 04-M5	4	M5*P0.8	27.3	17.5	11	3.5	8	10	100
PA 06-01	6	PT 1/8	31.2	23	13	7.5	12	10	50
PA 08-01	8	PT 1/8	33	22.7	14.4	7.5	12	10	50
PA 08-02	8	PT 1/4	37.2	26.2	14.4	9.5	14	5	25
PA 10-02	10	PT 1/4	40.3	26.2	18.4	9.5	14	5	25
PA 10-03	10	PT 3/8	44.2	32	18.4	10.5	19	5	25
PA 12-03	12	PT 3/8	45	32	21	10.5	19	5	20
PA 12-04	12	PT 1/2	50.8	39	21	14	24	5	20

### PAF dual female banjo

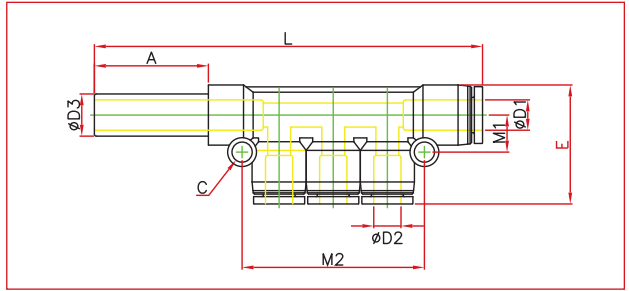


MODEL	ØD	T1 / T2	E	L	F	A1	H (Hex)	Q'ty per bag	Q'ty per box
PAF 04-M5	4	M5*P0.8	27.3	20	11	3.5	8	10	100
PAF 06-01	6	PT 1/8	31.2	28	13	7.5	14	10	50
PAF 08-01	8	PT 1/8	33	28	14.4	7.5	14	10	50
PAF 08-02	8	PT 1/4	37.2	33	14.4	9.5	17	5	25
PAF 10-02	10	PT 1/4	40.3	33	18.4	9.5	17	5	25
PAF 10-03	10	PT 3/8	44.2	38.9	18.4	10.5	21	5	20
PAF 12-03	12	PT 3/8	45	39.9	21	10.5	21	5	15
PAF 12-04	12	PT 1/2	50.8	46.6	21	14	24	5	10



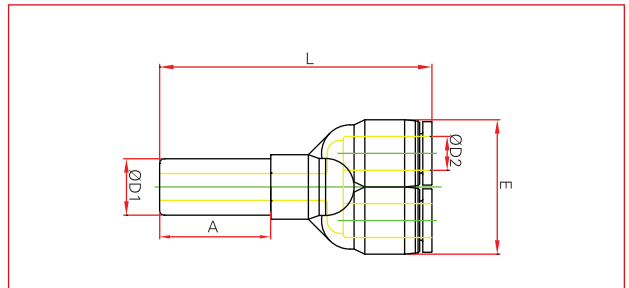
FLEXIBLE REINFORCED PVC AIR TOOL HOSE ASSEMBLY

## PKJ reducer triple branch union



MODEL	ØD1	ØD2	ØD3	L	A	E	C	M1	M2	Q'ty per bag	Q'ty per box
PKJ 04	4	4	4	76	20.5	27	3.2	9	41.5	5	25
PKJ 0604	6	4	6	77.5	22	27	3.2	9	41.5	5	25
PKJ 06	6	6	6	77.5	22	27	3.2	9	41.5	5	25
PKJ 0804	8	4	8	80	24	27	3.2	9	41.5	5	25
PKJ 0806	8	6	8	80	24	27	3.2	9	41.5	5	25
PKJ 08	8	8	8	98.5	24	33	4.2	12	47.8	5	25
PKJ 1006	10	6	10	101	25.5	32.5	4.2	12	47.8	5	15
PKJ 1008	10	8	10	101	25.5	32.5	4.2	12	47.8	5	15
PKJ 10	10	10	10	110.5	25.5	37.5	4.5	12	56.5	5	15
PKJ 1208	12	8	12	113.5	27	37	4.5	15.5	59.5	3	12
PKJ 1210	12	10	12	113.5	27	38	4.5	15.5	59.5	3	12
PKJ 12	12	12	12	121	27	39.5	4.5	15.5	67.5	3	12

## PYJ plug-in J



MODEL	ØD1	ØD2	L	A	E	Q'ty per bag	Q'ty per box
PYJ 04	4	4	52	20.5	22	10	50
PYJ 0604	6	4	54	22	22	10	50
PYJ 06	6	6	54.5	22	26	10	50
PYJ 0806	8	6	56.5	24	26	10	50
PYJ 08	8	8	59	24	29.5	10	50
PYJ 1008	10	8	64	25.5	29.5	5	25
PYJ 10	10	10	69.5	25.5	37	5	25
PYJ 1210	12	10	73.5	27	37	5	25
PYJ 12	12	12	74	27	42	5	20